



METAMARK
The Materials Company

Premium Cast
Automotive Colour Wrap Film

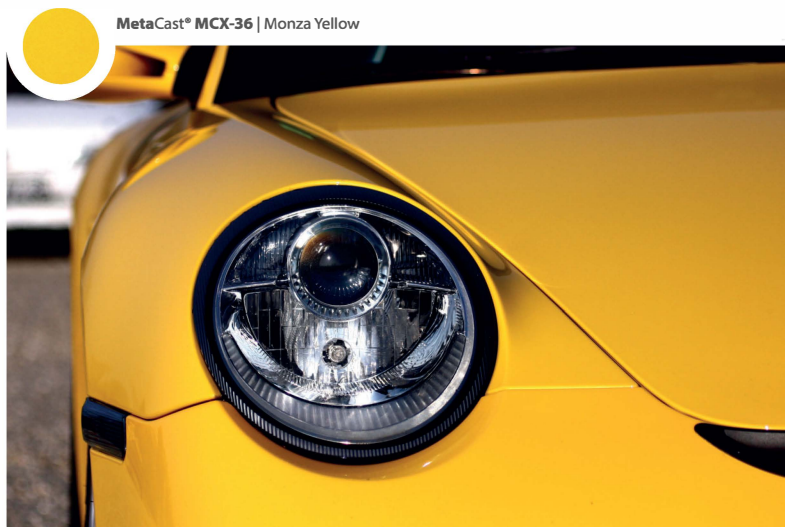
Metamark Automotive Films

MetaCast[®] MCX
Premium Cast Automotive Colour Wrap Film

Performance you can trust



MetaCast® MCX-84 | Electric Storm



MetaCast® MCX-36 | Monza Yellow



MetaCast® MCX-22ⁱⁿ | Chalk Grey

Premium Cast Automotive Colour Wrap Film

MetaCast® MCX is a premium cast automotive colour change film, offering wrap professionals the ultimate performance for full vehicle wraps.

MetaCast® MCX has a range specified to include contemporary and brand colours, as well as a number of Metamark Inspire Colours™ developed to reproduce some of the most desirable OEM paint colours in a wrap film.

MetaCast® MCX is an advanced premium cast film, combined with MetaGlide® air release technology. This micro channel air release system gives an optimal performance with enhanced repositionability and high adhesive strength. This gives total confidence when fitting into 3D channels and recesses.

MetaCast® MCX is backed by our MetaSure™ warranty, offering up to 12 years durability¹.

MetaCast® MCX
Premium Cast Automotive Colour Wrap Film

Premium Cast Automotive Colour Wrap Film



MetaCast® MCX-39 | FireFox

Repositionable next generation adhesive



Dual layer premium cast film for superior handling and durability

MetaCast® MCX-63ⁱⁿ | Speed Green



Up to 12 years external durability¹ and MetaSure™ Warranty

Metamark Inspire Colours™ developed to reproduce some of the most desirable OEM paint colours

MetaCast® MCX-51ⁱⁿ | Miami Blue

Specifications

Face Film	100 Micron Premium Cast
Adhesive	MetaGlide® Micro Channel Grey Solvent-Based
Liner	140gsm Structured Micro Channel PE Layflat
Durability¹	12 years black and white 10 years colours 5 years metallics
Shelf life	2 years
Finishes	25 colours
Roll Widths²	1525mm
Roll Lengths	15m / 30m

Features and Benefits



Automotive Coloured Wrap

Colour wrap film with up to 12 years external durability¹ and MetaSure™ Warranty.



Premium Cast Film

Highly conformable dual layer premium cast 100 micron film, for superior handling and durability.



MetaGlide® Air Release Technology

Micro air channel, repositionable opaque next generation adhesive, for ease of installation and clean removal.



Inspiring Colours

Includes Metamark Inspire Colours™ developed to reproduce some of the most desirable OEM paint colours in a wrap film.

MetaCast® MCX | Colours

Gloss | Solid

Matt | Metallic



MetaCast® MCX-36
Monza Yellow



MetaCast® MCX-51 in
Miami Blue



MetaCast® MCX-54
Bavarian Blue



MetaCast® MCX-63 in
Speed Green



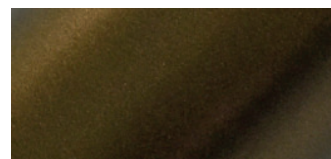
MetaCast® MCX-48
Cooper Red



MetaCast® MCX-58
Lapis Blue



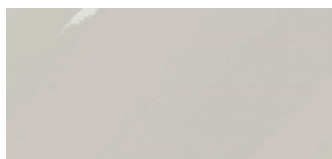
MetaCast® MCX-87
Plum Crazy



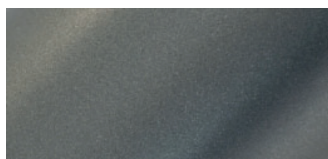
MetaCast® MCX-73
Capri Bronze



MetaCast® MCX-00
Simply White



MetaCast® MCX-22 in
Chalk Grey



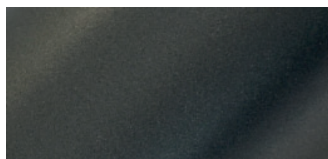
MetaCast® MCX-96 in
Urban Steel



MetaCast® MCX-26 in
Nardo Grey



MetaCast® MCX-28
Café Racer



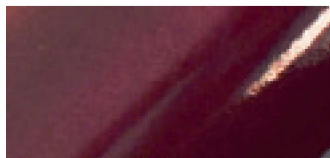
MetaCast® MCX-97 in
Carbon Steel

MetaCast® MCX | Colours

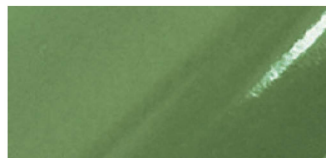
Gloss | Metallic



MetaCast® MCX-39
FireFox



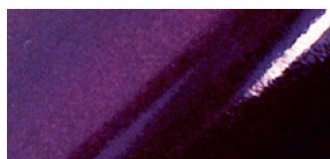
MetaCast® MCX-86
Nightlife



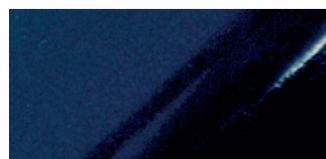
MetaCast® MCX-67
Bullitt Green



MetaCast® MCX-46
Volcano Red

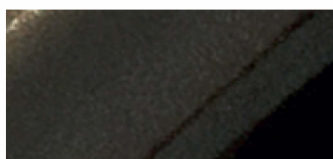


MetaCast® MCX-84
Electric Storm



MetaCast® MCX-59
Blue Abyss

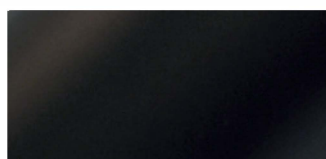
Blacks



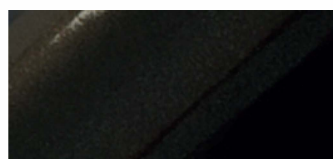
MetaCast® MCX-98
Blizzard Stone



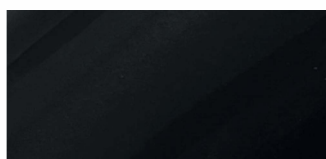
MetaCast® MCX-94
Pure Iridium



MetaCast® MCX-12
Gotham Black | Matt Solid



MetaCast® MCX-99
Obsidian Black



MetaCast® MCX-10
Jet Black | Gloss Solid

MetaCast® MCX Inspire Colours™

Colour is everything when it comes to personalising your vehicle. That is why we came up with Metamark Inspire Colours™. These colours were developed to reproduce some of the most desirable OEM paint colours from leading manufacturers.

These colours are annotated in

¹ Zone 1 - Vertical exposure under Northern European conditions. For other regions and climates in regards to material external weathering, please refer to our full Durability Guide found on our website. All information stated is correct at time of creation.

² Matt finishes 1520mm width

MetaCast[®] MCX

Premium Cast Automotive Colour Wrap Film

Choose Metamark

Metamark materials are trusted by the world's leading producers of signs and graphics. They are specified by leading brands' managers, and are insisted on when looking for quality and value.

Technical Leadership

Our class leading manufacturing, selection and conversion control processes guarantee the highest standard of quality, technical compatibility and consistency. Metamark's technical leadership is delivered as standard with every product we sell.

Customer Satisfaction and Value

We build relationships and we're prepared to listen, so we ensure our products and services better reflect your needs and technical requirements. We manage every element of your experience in working with us, from product performance to state of the art order processing.



For the latest pricing, application guides and technical support, visit www.metamark.co.uk

For all sales enquiries or to request a sample, contact us at:
UK: 0345 345 5645 • International: +44 (0) 1524 387132
Email: sales@metamark.co.uk

Metamark (UK) Limited

Metamark House, Genesis Business Park, Woking, GU21 5RW, UK
Luneside, New Quay Road, Lancaster, LA1 5QP, UK

The above data is given in good faith to provide an indication of the performance of the product. Purchasers should consider the suitability of each product for its intended use and the purchaser assumes all risks in connection with such use. Seller shall not be liable for damages in excess of the purchase price of the product nor for incidental nor consequential loss.

MetaCast[®] and MetaGlide[®] are registered trademarks of Metamark (UK) Limited.

Images of vehicles in this brochure are illustrative of MetaCast[®] film applied to those vehicles. Metamark (UK) Limited is not affiliated with or authorised by any of the manufacturers of the vehicles shown in the illustrations.

Version 1 - 09/22

Performance you can trust